

Replacement **Abru Stepladder Feet**

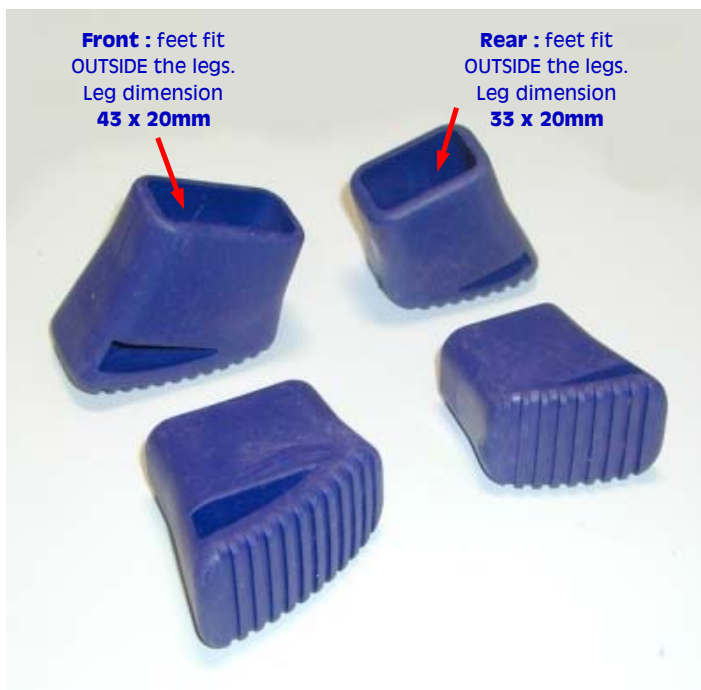
We offer a range of replacement feet for selected models of ABRU stepladders. These will fit the models as described but are NOT guaranteed to fit any other Abru steps or other brands. For feet to suit different steps not listed here please see our **TRIM2FIT** feet for ladders and our **TRIM4FEET** rubbers for stepladders.



1/ **Abru Domestic Platform Step Feet** (code: **ABDSF** full set of 4) We don't sell these steps but do keep replacement feet for them. These are plastic plug feet which push **INSIDE** the box section legs. Front legs outside dimensions 45 x 21mm. Rear legs outside dimensions 35 x 21mm.



Overall FOOT dimensions
L x W :
Front - 46mm x 22mm
Rear - 36mm x 22mm



2/ **Abru Blue Seal Platform Step Feet** : sizes 2 tread - 7 tread (code: **ABSSF** full set of 4) We sell these steps as code ABSS2 - ABSS7. One set of feet fits all 6 sizes. These are plastic feet which fit **OUTSIDE** the box section legs. Front legs outside dimensions 43 x 20mm. Rear legs outside dimensions 33 x 20mm.



Overall FOOT dimensions
L x W :
Front - 50mm x 30mm
Rear - 40mm x 30mm

01452 520144
www.ladders999.co.uk



Replacement **Abru Stepladder Feet**



3/ **Abru Blue Seal Platform Step Feet** : size 8 tread only (code: **ABSSF8** full set of 4) We sell these steps as code ABSS8. These are plastic plug feet which push **INSIDE** the box section legs. Front legs outside dimensions 40 x 23mm. Rear legs outside dimensions 30 x 23mm.



Overall FOOT dimensions
L x W :
Front - 42mm x 24mm
Rear - 32mm x 24mm



4/ **Abru 3-Way Combi Ladder/Stepladder Feet** (code: **ABS3WAYF** full set of 4) We sell these combi ladders/steps as code ABS3WAY. All 4 feet are the same and fit **OUTSIDE** the channel section legs. All feet fit over channels 57 x 20mm.



Overall FOOT dimensions
L x W :
64mm x 27mm

See our excellent website at
www.ladders999.co.uk

for details of our huge range
of ladders, steps, podium steps
and scaffold towers



UNITS 2 & 10 CHANCEL CLOSE TRADING ESTATE
EASTERN AVENUE **GLOUCESTER** GL4 3SN
FAX : 01452 505580
TEL: 01452 520144

www.ladders999.co.uk sales@lansfordaccess.co.uk

Trim4Feet Industrial Stepladder Feet

Trim4Feet Pack A :

1 x 300mm rubber strip ; easily enough for one stepladder ; can be trimmed to fit front & back legs when all 4 legs are cut **parallel** to the floor



Cross section

Trim4Feet Pack B :

1 x 200mm rubber strip + 2 x solid bung feet - all can be trimmed to fit one step with back leg ends which are **not parallel** to the floor

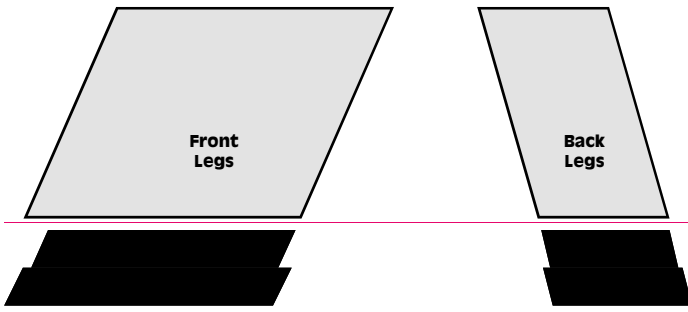


- ▶ Replacements for your missing, worn or broken Industrial Stepladder Feet.
- ▶ **Trim4Feet may be the solution to your worn feet problem!!**
- ▶ These are Industrial Stepladder Rubber Feet which can be trimmed easily with a hacksaw to fit most industrial steps.
- ▶ For steps with Channel Section legs, or L Section legs or Box Section legs.
- ▶ Two types - Pack A or Pack B will be suitable for the majority of industrial alloy types.
- ▶ Each pack fits one stepladder.
- ▶ **Pack A** is 1 x 300mm length of Trim4Feet rubber - enough for front and rear legs on steps with all 4 legs cut **parallel** to the floor.
- ▶ **Pack B** is 1 x 200mm length of Trim4Feet rubber + 2 x solid bung feet - all can be trimmed to fit one step with back leg ends which are **not parallel** to the floor.
- ▶ **Optional Fixing Packs** available if required to make fitting faster and easier.
- ▶ See more overleaf

01452 520144
www.ladders999.co.uk



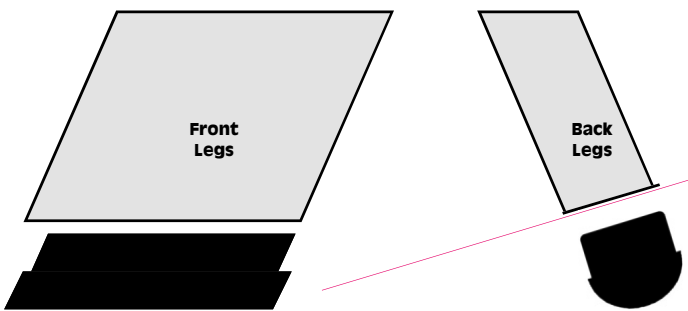
Trim4Feet Industrial Stepladder Feet



Trim4Feet Pack A :

1 x 300mm rubber strip ; enough for all four legs of one stepladder ; can be trimmed to fit front & back legs in steps with side stiles of rectangular channel & "L" & box section

Front and back legs are CUT PARALLEL to floor = Pack A needed

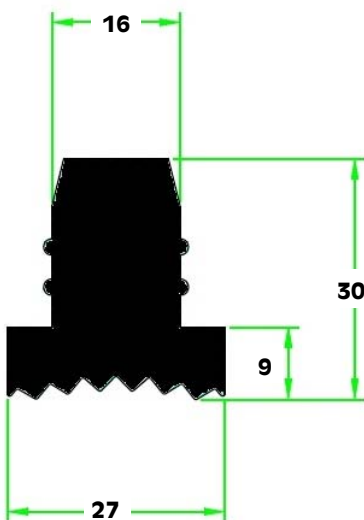


Trim4Feet Pack B :

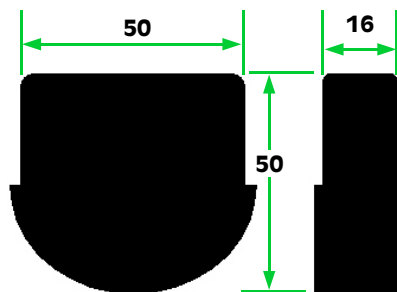
1 x 200mm rubber strip + 2 solid bungs; enough for all four legs of one stepladder ; can be trimmed to fit front & back legs in steps with side stiles of rectangular channel & "L" & box section

Back legs are NOT CUT PARALLEL to floor = Pack B needed

Solid rubber strip and bungs can be trimmed with a hacksaw or sharp knife to fit your steps. Use the stepladder stiles as a template and cut rubber strip at side stile angle. Alternatively, cut vertically to a shorter length which will leave a small gap at each end of stile.



Trim4Feet dimensions



Solid Bung dimensions

Optional Stepladder Feet Fixing Packs



www.ladders999.co.uk

01452 520144
www.ladders999.co.uk

