



GENERAL SAFETY RULES

Roof Guardrail fitting instructions.

To be used in conjunction with standard tower assembly guide



BEFORE USE

Please read this guide carefully before using this equipment.

Mobile folding tower systems and work platforms may only be assembled and dismantled by persons familiar with these instructions

Please note that photographs are for illustrative purposes only. Build methods are generic to both systems.

This step by step user guide provides you with easy to follow instructions to assemble the Minifold and Klikfold systems using the 3T (through the trapdoor) method safely.

For further information on the safe use of mobile access equipment follow the PASMA operator's code of practice.

RISK ASSESSMENT

A risk assessment must be carried out before using any access equipment.

If you are using this equipment at work then it must be inspected and identified as safe to use in accordance with The Working at Height Regulations 2005 before you access any platform.

For further help, guidance, replacement spare parts or information on this or other products please contact Euro Towers Limited on +44 (0)1604 644774 or email sales@eurotowers.co.uk

MAINTENANCE GUIDE

Inspect the equipment to confirm that all parts are present according to the kit lists and that all parts function correctly and are not damaged. Check that all folding gates, frames, braces, platforms and stabilizers are firmly in place and that all locking mechanisms are functioning correctly.

Do not use any damaged parts, Isolate, Tag and remove them from use.

Keep the components clean to ensure free assembly and dismantling, and to remove slip/trip hazards from frame rungs and platforms.

Do not misuse or abuse the equipment with heavy objects, hammers etc... do not throw the equipment in and out of vehicles, or to the ground when dismantling. Such abuse may reduce the structural integrity of the system.

MAINTENANCE RULES

Ensure that the scaffold tower is kept clean, especially the spigots and sockets. These should fit together with ease and be secured by an interlock clip.

Check frames and braces, adjustable legs and boards for paint, grit, burrs etc. Remove any foreign substance with a light wire brush. Check no slip hazards exist on the platform.

Check castor wheel for wear and that the brake engages properly.

Where guardrail and platform hooks attach the frames, ensure that the frame rungs are kept clean.

Ensure that all locking hooks function correctly. If necessary lubricate with light oil.

The inside diameter of all hooks should be kept clean to ensure they fit to other components without being forced.

If in any doubt about the proper use and maintenance of the scaffold tower equipment, consult the manufacturer.

Do not misuse or abuse the scaffold tower with heavy objects, hammers etc. Do not throw components in and out of vehicles or to the ground when the tower is being dismantled. Such abuse may reduce the structural integrity of the equipment or scaffold tower.

REMEMBER YOUR SAFETY DEPENDS THE SAFE ASSEMBLY AND USE OF THIS EQUIPMENT, RESPECT IT

GENERAL SAFETY RULES

USE OF STABILIZERS AND SAFE MOVEMENT

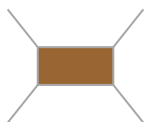
Stabilizers increase the EFFECTIVE BASE dimensions and improve the STABILITY of the tower.

Position the stabilizers symmetrically to obtain the MAXIMUM BASE DIMENSION.

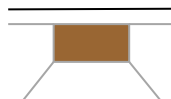
Lower arm as close to horizontal as possible

Stabilizers must be used for all platform heights above 1.7m at all times.

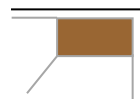
Free Standing Tower



Against a Wall



In a Corner



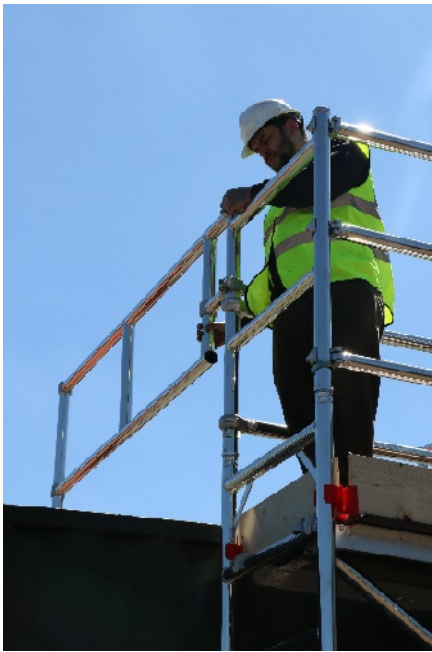
When moving a folding tower plan the route and be aware of hazards on the ground and up above. Watch out for overhead power lines or other electrical wiring and lighting.

Remove all materials and personnel and reduce the height (if required) to 3.6m platform height.

Adjust the top clamp of the stabilizers and lift the rubber foot no more than 25mm from the ground, release the braked wheels, and apply force manually by pushing at the base. Never use mechanical means to push/pull the Folding tower System.

Once in position reapply brakes, level tower and reposition all stabilizer feet to ensure firm contact with the ground.

ALWAYS TAKE CARE OF ALUMINIUM SCAFFOLD TOWER EQUIPMENT. NEVER CLIMB THE OUTSIDE OF A TOWER. REMEMBER YOUR SAFETY DEPENDS ON THE SAFE ASSEMBLY AND USE OF THE EQUIPMENT. RESPECT IT.



Fit your 2 roof guardrails to the side of the unit above the top rung ensuring the couplers are secure.



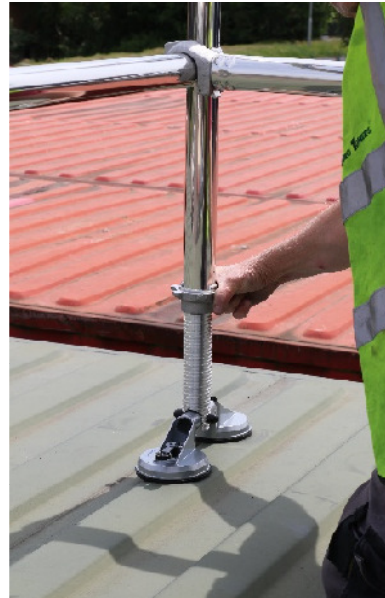
Add 2 additional braces to the roof guardrails from behind your existing guardrail



Move your 2 guardrail braces from the unit further out on the roof guardrail



Move the 2 braces again to the end of the roof guardrails from behind your existing guardrail. Then put the temporary guard braces to the back of the unit.



Adjust your roof guardrails so that they are in contact with the roof



Lock your suction feet to the roof by pressing down the 2 black levers

**Lansford Access Ltd. Tel: 01452
520144**

Address: Units 2 & 10 Chancel Close
Trading Estate,
Eastern Avenue, Gloucester, GL4 3SN.

