

# High-Clearance Alloy Scaffolds



KLIK Hi-Clear Unit Scaffolds



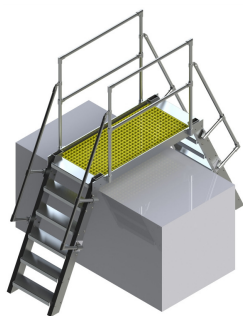
OmegaDeck 250 Scaffolds



GP Hi-Clearance Scaffolds



Bespoke Hi-Clearance Scaffolds over 3.0m long



Alloy  
Step-Over  
Platforms



**01452 520144**  
**[www.ladders999.co.uk](http://www.ladders999.co.uk)**



# Klik Hi-Clear Unit High-Clearance Scaffold



- » An industrial duty scaffold to span over immovable objects such as desks, hedges, conveyors to give safe access above.
- » Full guardrail safety for workers together with inclined ladder and hinged gate for easy access.
- » Fully mobile with locking castors and adjustable height legs for uneven ground conditions.
- » Clear height under platform 1.30m.
- » Standing platform height 1.40m (gives working/reach heights up to 3.40m).
- » Overall unit height 2.60m. Overall unit width 0.76m.
- » Choice of 3 lengths - 2.0m ; 2.5m ; 3.0m.
- » Manufactured under and certified to a TUV ISO9001: 2000 quality system.
- » Optional extras include Toeboard Assembly (softwood or plywood) and Base Plates (instead of castors).



## Klik Hi-Clear Scaffold Tech Specs

Appx Working Height - max	3400mm
Platform Height	1400mm
Clear Height below platform	1300mm
Overall Unit Height	2600mm
Overall Unit Width	760mm
Safe Working Load max	250kg

### Length Options

2.0m unit Overall Length	2380mm
2.0m unit Clear Length under platform	1600mm
2.5m unit Overall Length	2880mm
2.5m unit Clear Length under platform	2100mm
3.0m unit Overall Length	3380mm
3.0m unit Clear Length under platform	2600mm

**01452 520144**  
**www.ladders999.co.uk**

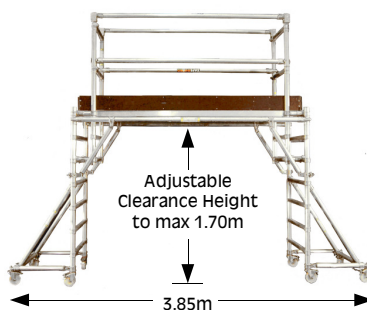




# OmegaDeck 250 High-Clearance Scaffold



- » An industrial duty scaffold to span over immovable objects such as desks, hedges, conveyors to give safe access above.
- » Height of platform adjusts to suit your requirements - max 1.70m clearance height under platform.
- » Full guardrail safety for up to 2 workers on platform together.
- » Fully mobile with locking castors.
- » Clear height under platform up to max 1.70m - can be on lower rungs to suit job in hand.
- » Standing platform height max 1.80m (gives working/reach heights up to max 3.80m).
- » Overall unit height max 2.80m (can be lower). Overall unit width 0.85m.
- » Choice of 3 lengths - standard length 2.5m (3.85m overall length) ; plus by special order - 1.5m & 3.0m lengths.
- » Manufactured under a BSI ISO9001 quality system and is compliant with the load safety factor requirements of BS EN1004.



## Omegadeck 250 Tech Specs

Appx Working Height - max	3800mm or lower
Platform Height (adjustable)	1800mm or lower
Clear Height below platform (adjustable)	1700mm or lower
Overall Unit Height (adjustable)	2800mm or lower
Overall Unit Width	850mm
Overall Length of 2.5m unit	3854mm
Clear Length under platform of 2.5m unit	2450mm
Safe Working Load max	225kg

**01452 520144**  
**www.ladders999.co.uk**



# GP Hi-Clearance scaffolds



GP Hi-Clearance Frames create a clear span at the base of a tower, enabling it to bridge over machines, lorry beds, desks, pipework runs, etc which would otherwise prevent the tower being erected in the required location.

They hook onto 5 Rung Ladderframe and Span frames to replace the lowest Horizontal & Diagonal Braces.



GP Hi-Clearance Frames can be used with both Double Width and Single Width towers.

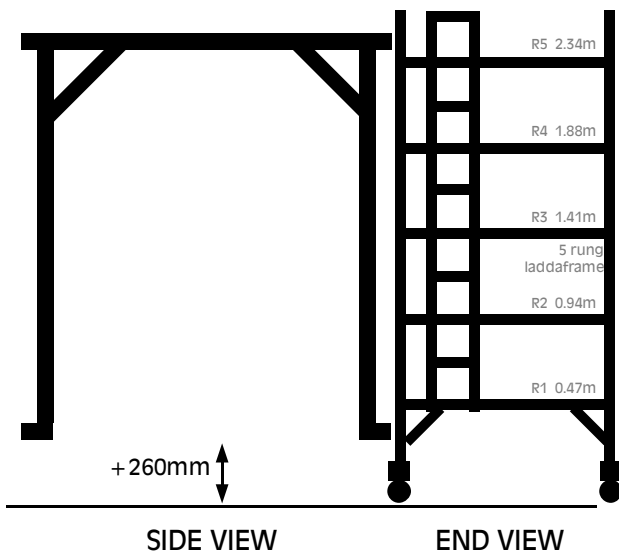
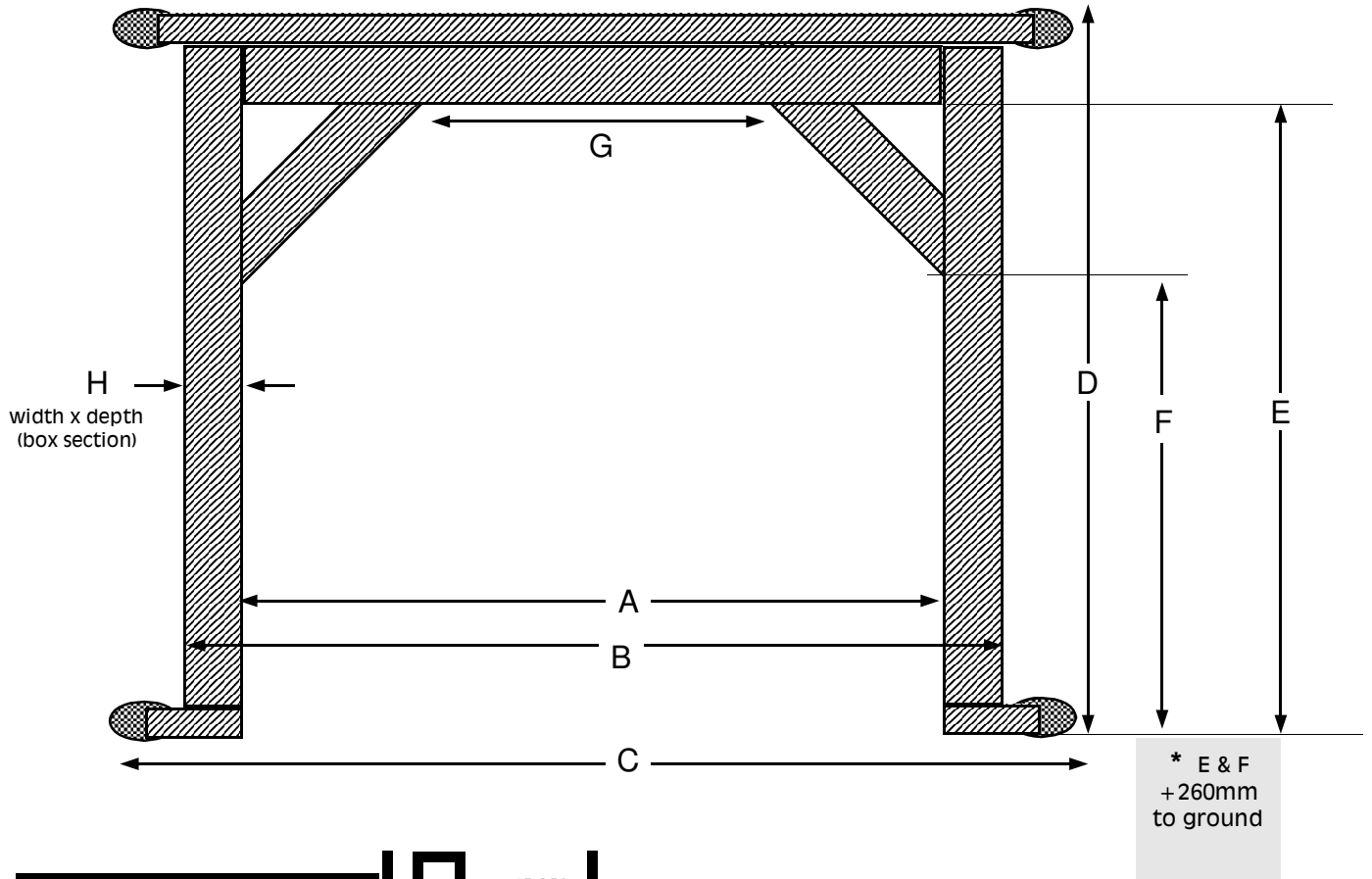


**01452 520144**  
**[www.ladders999.co.uk](http://www.ladders999.co.uk)**





# GP Hi-Clearance scaffolds



Dimensions mm			
	2.0m long	2.5m long	3.0m long
<b>A</b>	<b>1610</b>	<b>2110</b>	<b>2610</b>
<b>B</b>	1750	2250	2750
<b>C</b>	<b>1980</b>	<b>2475</b>	<b>3000</b>
<b>D</b>	1905	1905	1905
<b>E</b>	1787* + 260	1787* + 260	1787* + 260
<b>F</b>	1295* + 260	1295* + 260	1295* + 260
<b>G</b>	610	1115	1610
<b>H</b>	70x23	70x23	70x23

Clear span length = A  
 Clear span height (max) = E (+small extra height with Leg adjustment)  
 Max tower height 5.0m with these fitted.

**01452 520144**  
**www.ladders999.co.uk**



# Bespoke High-Clearance Scaffolds



Bespoke High-Clearance Scaffolds can be fabricated to your specific dimensions when greater clearance length is required than the standard GP Hi-Clear frames will allow ... over 3.0m clear length.

Choice of 2 widths .....  
Scaffolds can be either  
Single Width 0.72m wide  
or Double Width 1.35m  
wide.

Please enquire with your  
requirements &  
dimensions for a firm  
quotation.



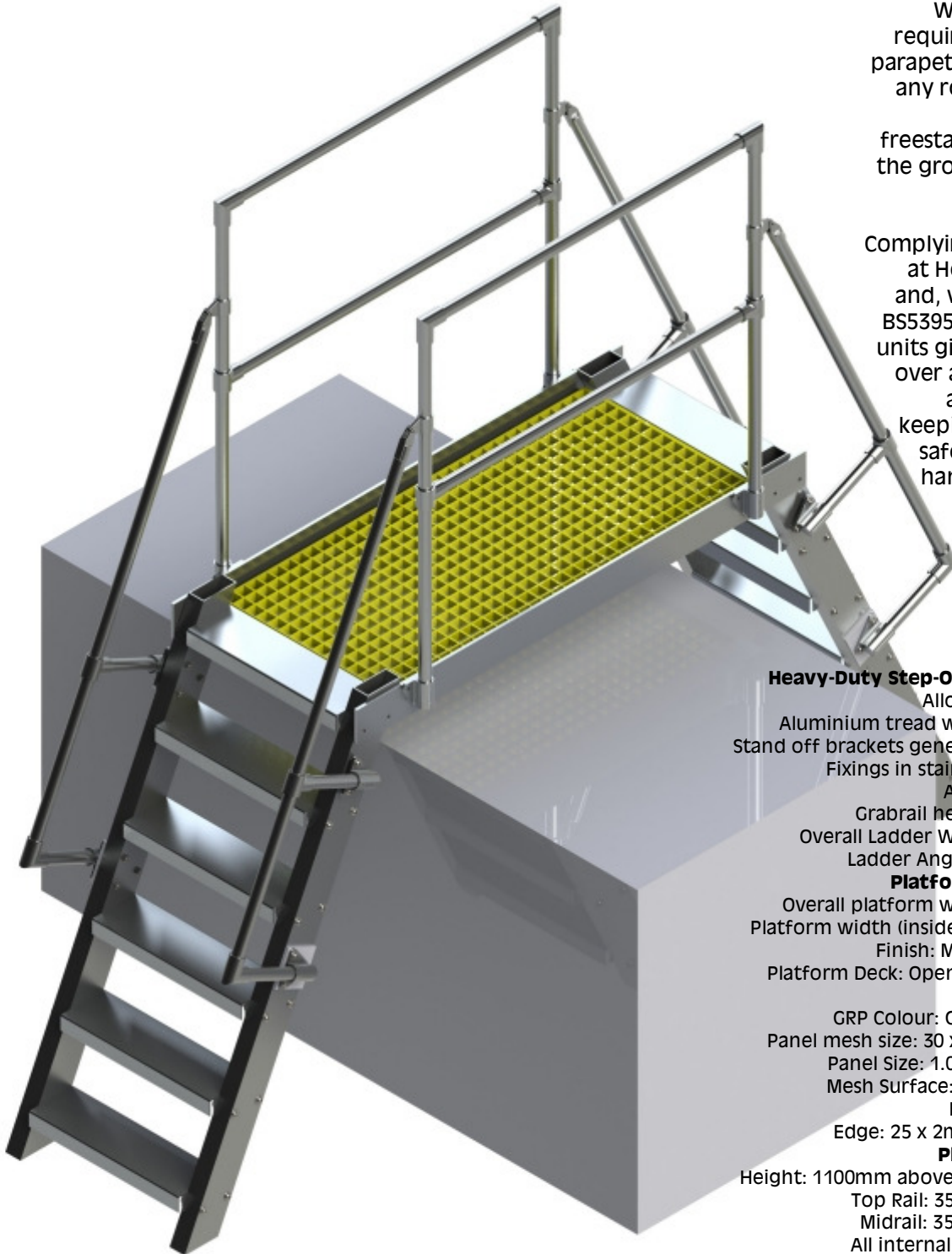
**01452 520144**  
**www.ladders999.co.uk**



# Alloy Step-Over units

Wherever transit is required over ducting, parapet walls, conduit or any roof obstruction a step over unit, freestanding or fixed to the ground, is the safest access available.

Complying with the Work at Height Regulations and, where applicable, BS5395: Part 3 step over units give flexible access over a range of widths and heights while keeping the operative safe and enclosed in handrail at all times.



## Heavy-Duty Step-Over Specifications

Alloy box section stiles  
Aluminium tread with integrated grip  
Stand off brackets generally from alloy bar  
Fixings in stainless steel A4 grade  
All alloy in mill finish  
Grabrail height: 300mm (nom)  
Overall Ladder Width: 600mm (nom)  
Ladder Angle: 75 degree (nom)

## Platform Specifications:

Overall platform width: 700mm (nom)  
Platform width (inside handrails): 600mm  
Finish: Mill finish aluminium  
Platform Deck: Open mesh non-slip GRP

## GRP Deck Panels

GRP Colour: Grey or Hi-Vis yellow  
Panel mesh size: 30 x 30mm open mesh  
Panel Size: 1.0 x 0.6m increments  
Mesh Surface: non-slip glass fibre  
Bars: 25 x 2mm bars  
Edge: 25 x 2mm on all four sides

## Platform Handrails:

Height: 1100mm above surface of decking  
Top Rail: 35mm diameter tube  
Midrail: 35mm diameter tube  
All internal fixings to be dome  
Handrails to be fitted to both sides  
Finish: Mill finish aluminium

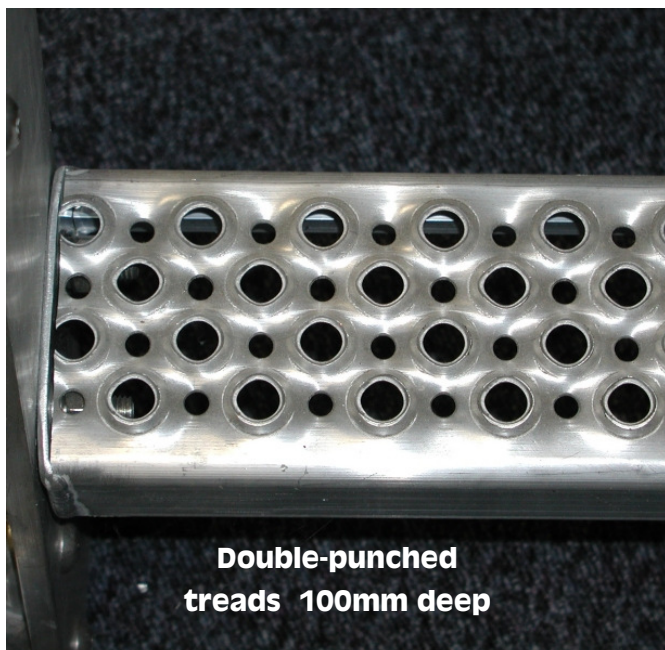
Please Note: Fixings to structure **not** included

**01452 520144**  
**www.ladders999.co.uk**





# Alloy Step-Over units



## **Standard Heavy-Duty Step-Over units**

### **material specifications**

Heavy duty 100 x 10mm flat alloy stiles

Heavy duty 100mm deep punched treads

Heavy duty 35mm diam handrails

Alloy kee-klamp sockets

Stainless steel fixings A4 grade

Optional GRP Grid for shallow  
angle ladders & platform decks



**01452 520144**  
**www.ladders999.co.uk**





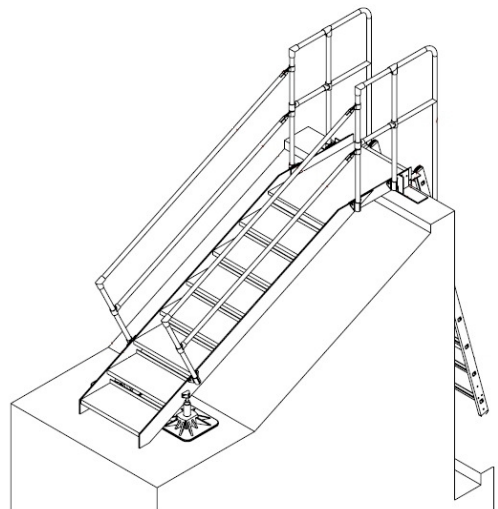
# Alloy Step-Over units

## Z and U style Step-Overs

Highly configurable designs will solve the majority of crossover platform requirements to clear pipe runs conveyors and fixed machinery



Roofline step-over platforms can even have removable ladders hooked onto one side for security



**01452 520144**  
**[www.ladders999.co.uk](http://www.ladders999.co.uk)**





# Roofline Step-Overs



Wherever transit is required over ducting, parapet walls, conduit or any roof obstruction a step over unit, freestanding or fixed to the floor, is the safest access available.

Complying with the Work at Height Regulations and, where applicable, BS5395: Part 3, step over units give flexible access over a range of widths and heights while keeping the operatives safe and enclosed with handrails at all times.



... even very tiny ones!!

We offer supply only quotations, and ( in certain locations ) a supply and fix service too.



**01452 520144**  
**[www.ladders999.co.uk](http://www.ladders999.co.uk)**





# Alternative Alloy Step-Over units



Step-Over units of all designs and sizes can be made to order



Lighter duty units can be fabricated for less demanding applications



Quotations based on your own requirements

See our excellent website at  
**[www.ladders999.co.uk](http://www.ladders999.co.uk)**

for details of our huge range  
of ladders, steps, podium steps  
and scaffold towers



UNITS 2 & 10 CHANCEL CLOSE TRADING ESTATE  
EASTERN AVENUE **GLOUCESTER** GL4 3SN  
FAX : 01452 505580  
**TEL: 01452 520144**

**[www.ladders999.co.uk](http://www.ladders999.co.uk)** [sales@lansfordaccess.co.uk](mailto:sales@lansfordaccess.co.uk)

All prices, details and specifications are subject to change without notice and are those ruling at date of order. E&OE.