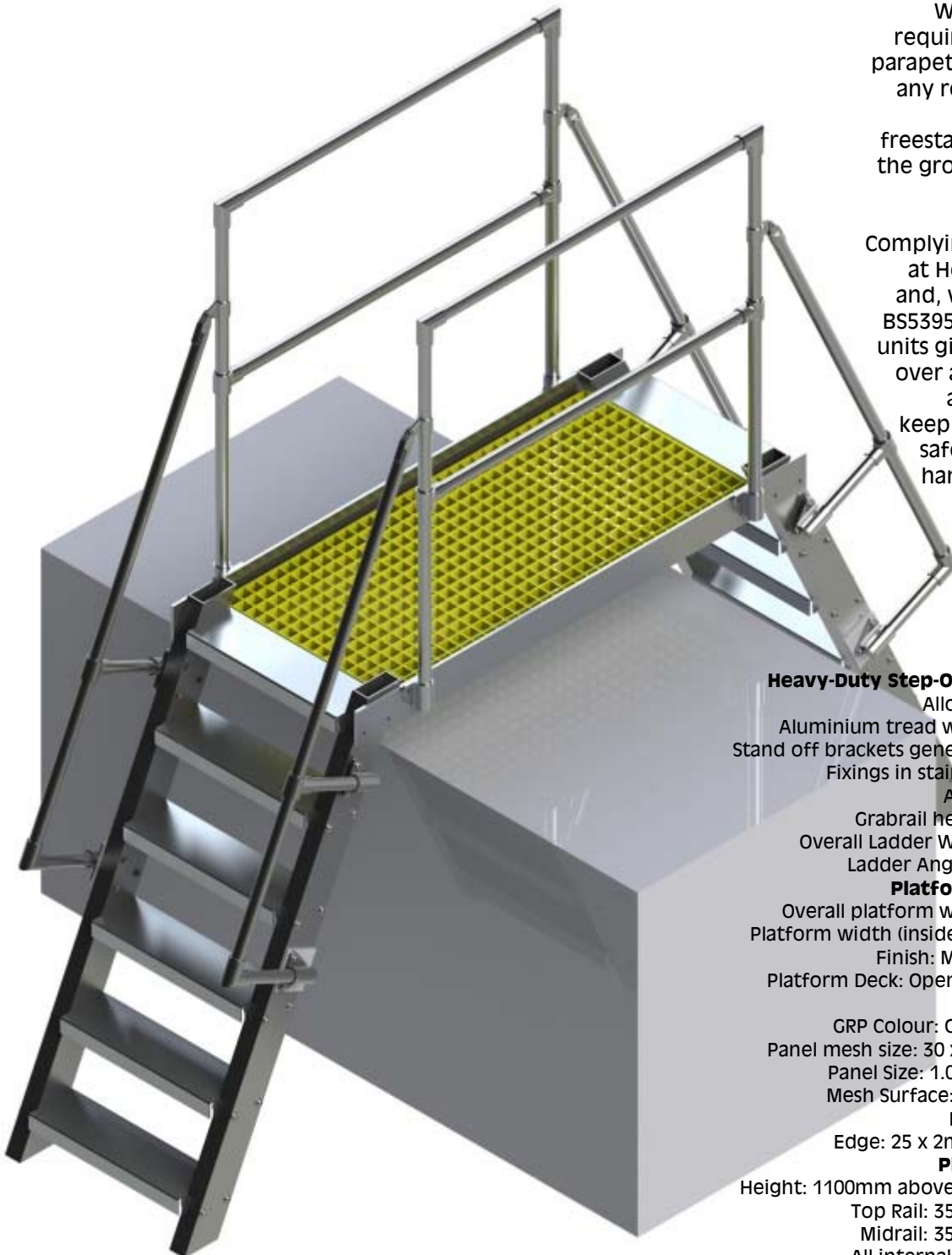


Alloy Step-Over units

Wherever transit is required over ducting, parapet walls, conduit or any roof obstruction a step over unit, freestanding or fixed to the ground, is the safest access available.

Complying with the Work at Height Regulations and, where applicable, BS5395: Part 3 step over units give flexible access over a range of widths and heights while keeping the operative safe and enclosed in handrail at all times.



Heavy-Duty Step-Over Specifications

Alloy box section stiles
Aluminium tread with integrated grip
Stand off brackets generally from alloy bar
Fixings in stainless steel A4 grade
All alloy in mill finish
Grabrail height: 300mm (nom)
Overall Ladder Width: 600mm (nom)
Ladder Angle: 75 degree (nom)

Platform Specifications:

Overall platform width: 700mm (nom)
Platform width (inside handrails): 600mm
Finish: Mill finish aluminium
Platform Deck: Open mesh non-slip GRP

GRP Deck Panels

GRP Colour: Grey or Hi-Vis yellow
Panel mesh size: 30 x 30mm open mesh
Panel Size: 1.0 x 0.6m increments
Mesh Surface: non-slip glass fibre
Bars: 25 x 2mm bars
Edge: 25 x 2mm on all four sides

Platform Handrails:

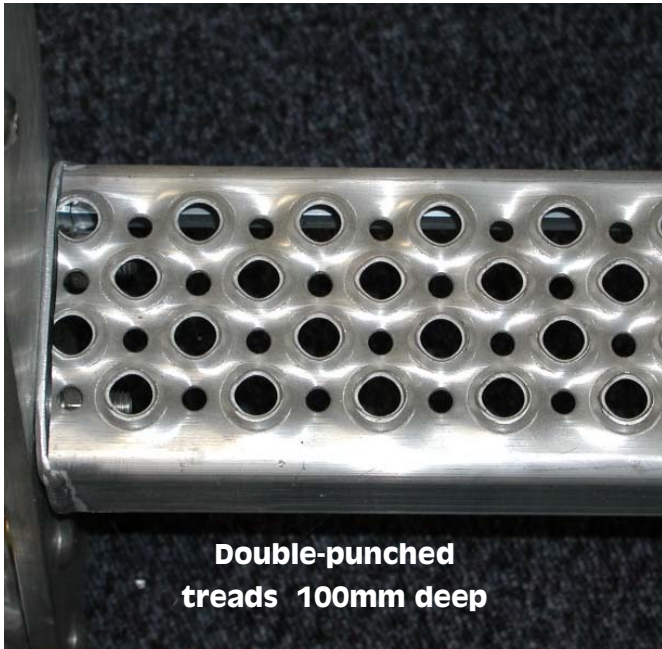
Height: 1100mm above surface of decking
Top Rail: 35mm diameter tube
Midrail: 35mm diameter tube
All internal fixings to be dome
Handrails to be fitted to both sides
Finish: Mill finish aluminium

Please Note: Fixings to structure **not** included

01452 520144
www.ladders999.co.uk



Alloy Step-Over units



Standard Heavy-Duty Step-Over units

material specifications

- Heavy duty 100 x 10mm flat alloy stiles
- Heavy duty 100mm deep punched treads
- Heavy duty 35mm diam handrails
- Alloy kee-klamp sockets
- Stainless steel fixings A4 grade
- Optional GRP Grid for shallow angle ladders & platform decks



01452 520144
WWW.ladders999.CO.UK



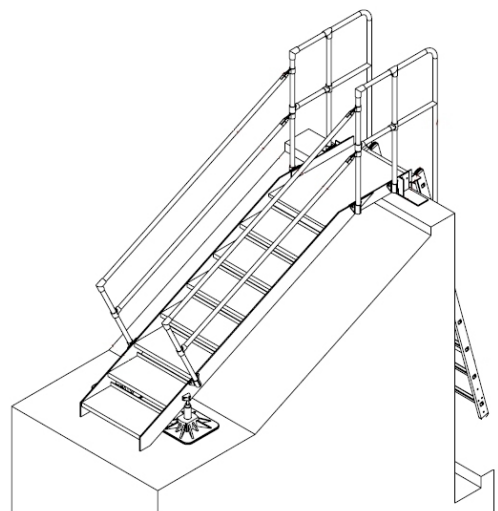
Alloy Step-Over units

Z and U style Step-Overs

Highly configurable designs will solve the majority of crossover platform requirements to clear pipe runs conveyors and fixed machinery



Roofline step-over platforms can even have removable ladders hooked onto one side for security



01452 520144
www.ladders999.co.uk



Roofline Step-Overs



Wherever transit is required over ducting, parapet walls, conduit or any roof obstruction a step over unit, freestanding or fixed to the floor, is the safest access available.

Complying with the Work at Height Regulations and, where applicable, BS5395: Part 3, step over units give flexible access over a range of widths and heights while keeping the operatives safe and enclosed with handrails at all times.



... even very tiny ones!!

We offer supply only quotations, and (in certain locations) a supply and fix service too.



01452 520144
www.ladders999.co.uk



Alternative Alloy Step-Over units



Step-Over units of all designs and sizes can be made to order



Lighter duty units can be fabricated for less demanding applications



Quotations based on your own requirements

See our excellent website at
www.ladders999.co.uk

for details of our huge range
of ladders, steps, podium steps
and scaffold towers



UNITS 2 & 10 CHANCEL CLOSE TRADING ESTATE
EASTERN AVENUE **GLoucester** GL4 3SN
FAX : 01452 505580
TEL: 01452 520144

www.ladders999.co.uk sales@lansfordaccess.co.uk

All prices, details and specifications are subject to change without notice and are those ruling at date of order. E&OE.